



IRRAWANG PUBLIC SCHOOL

PROCEDURE FOR ASSISTING STUDENT WITH LEARNING DIFFICULTIES

Last Review: 2nd May, 2024 Next Review: Term 2, 2025
Principal: Mrs Stacy Mathieson

This procedure applies to all staff employed in Public Schools NSW, in school and non-school based positions. It also applies to students who attend public schools and has implications for each school community.

Objectives - statement

- In any one school there will be students who may experience difficulties with learning. These difficulties may vary in cause, nature, intensity and duration.
- Learning difficulties may arise at any time throughout a student's school life. Students may experience difficulties in learning because of the ways in which they learn or the rates at which they learn.
- Students experiencing difficulties in learning will have differing levels of educational need, which may require the provision of one or more educational support services over varying periods of time.
- Prime responsibility for meeting the specific learning needs of students with difficulties in basic areas of learning lies with the school and the classroom teacher.
- The school learning and support team plays a key role in ensuring that the specific learning needs of students experiencing difficulties in learning are met.

Audience and applicability

This policy applies to all staff employed by the department including in school and non-school based positions. It also applies to students who attend NSW public schools and has implications for each school community.

Context

- This policy complies with the Disability Discrimination Act (DDA, 1992) and the Disability Standards for Education 2005.
- This policy reflects commitments made by the NSW Department of Education within its Disability Inclusion Action Plan 2016-2020.
- This policy reflects responsibilities of schools indicated within the Curriculum Planning and Programming, Assessing and Reporting to parents K-12 Policy
- This policy also reflects the key principles of operation for supporting students with learning difficulties, including those with disabilities.

Responsibilities and delegations

Director, disability, learning and support:

- approval of policy documents

Procedure owner, director, disability, learning and support:

- publication and currency of the policy and support material
- notification to staff of any changes to this policy

Contact person; leader, support and development:

- provision of advice on interpretation and implementation of the policy

Leader, support and development:

- management and oversight of the policy and its implementation
- provision of advice and assistance to support staff on policy development, implementation and evaluation
- monitoring, evaluation, review and reporting to the director, disability programs on the implementation of the policy and supporting documents

Principals are responsible for ensuring implementation of support for students experiencing difficulties in learning. School management plans include the use of Learning and Support resources to improve outcomes for students experiencing difficulties in learning.

Teachers and support staff are responsible for ensuring that students who experience difficulties in learning are assisted according to the policy statement and key principles underpinning support.

Verification of the currency of the department's policy documents by reference to the policy website. PD/2006/0342 is the unique identifier of this policy document. It is the responsibility of the user to verify that this is the current and complete version of the document, located at <https://education.nsw.gov.au/policy-library/policies/pd-2006-0342> Supporting documents should also be referred to in the implementation of this policy.

Monitoring, evaluation and reporting requirements

1. The Director, Disability, Learning and Support will monitor the implementation of this policy and will report annually, or as required, to the Executive.
2. Principals are responsible for the implementation and monitoring of this policy in their schools.
3. Directors, Educational Leadership will support principals with the implementation of this policy.

Contact

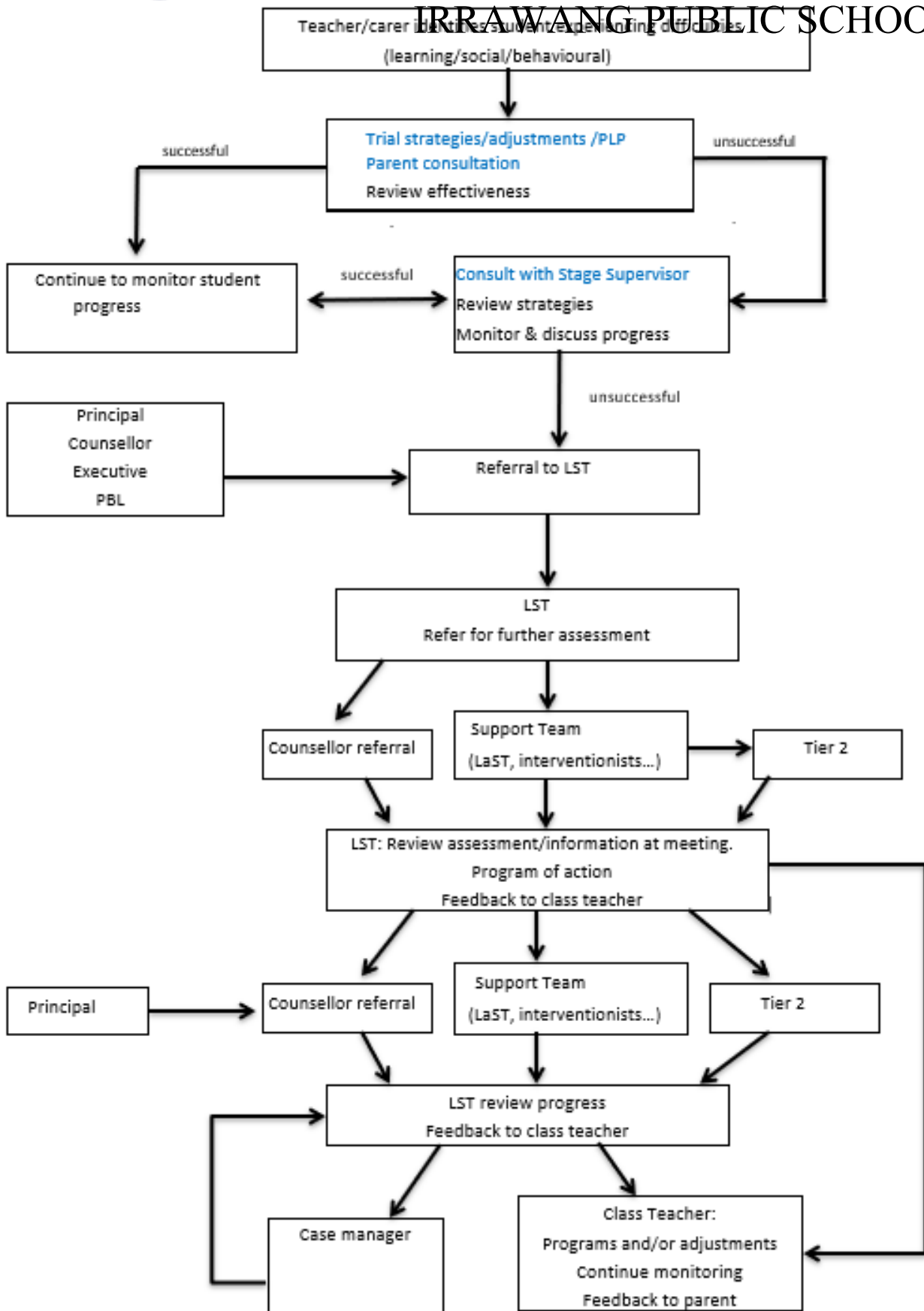
Leader, Support and Development (02) 7814 2750.

Our current school LST flowchart and NDIS Flowchart are attached below. For further information, and for original documents, please [click here](#) to go to the LST file on the IPS common drive.



Irrawang P.S. Learning and Support Flowchart

IRRAWANG PUBLIC SCHOOL



Irrawang Public School NDIS Provider Flowchart

Schools and service providers share an interest in achieving positive educational outcomes for students through developing opportunities to strengthen collaborative partnerships with principals, teachers, parents, therapists and service providers working within the school setting.

